



AW526-LS High Power 2-Way All Weather Loudspeaker with 1 x 15" LF

Professional Series

Key Features:

- ▶ Weather-Resistant, All Fiberglass Enclosure
- ▶ EN54-24 Compliant
- ▶ 120° x 60° Coverage
- ▶ 2265H Differential Drive Low-Frequency Driver
- ▶ 2432H High-Frequency Compression Driver
- ▶ Large PT Progressive Transition waveguide for excellent pattern control and low distortion
- ▶ Rotatable waveguide for vertical or horizontal orientation
- ▶ Available in Gray and Black Finish
- ▶ 400 W, 70/100V Transformer Included
- ▶ U-Type Mounting Bracket Included

Applications:

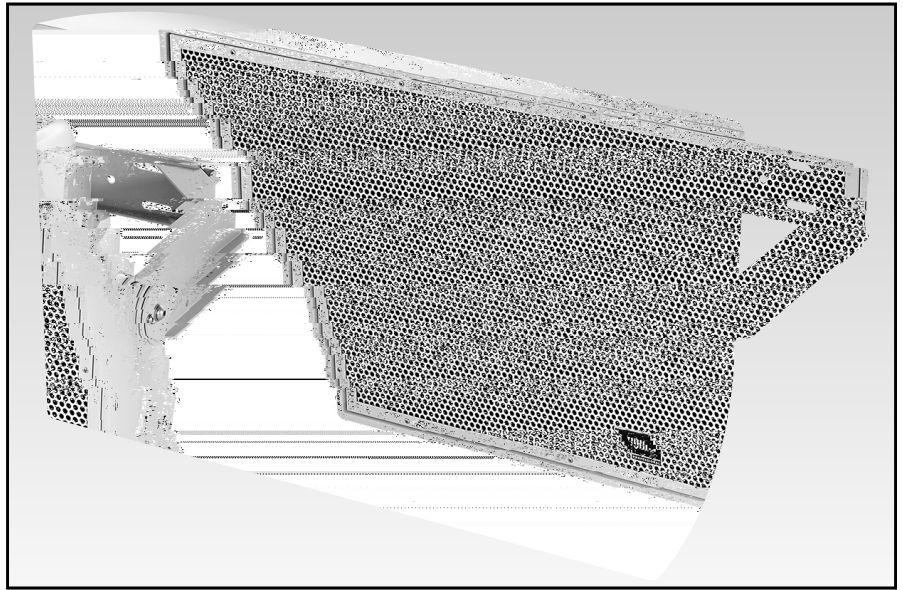
- ▶ Sports Facilities
- ▶ Themed Entertainment Venues
- ▶ Outdoor Entertainment Centers
- ▶ Cruise Ships
- ▶ Water Parks

The AW526-LS is a high power, lightweight, 2-way, full-range loudspeaker system comprised of the JBL Differential Drive dual voice coil and dual magnetic gap 2265H 380 mm (15 in) low-frequency driver and 2432H high-frequency 38 mm (1.5 in) exit, 75 mm (3 in) voice-coil compression driver. The large format Progressive Transition waveguide provides excellent 120° x 60° coverage. The waveguide is rotatable so the loudspeaker system can be used in either the vertical or horizontal orientation. The system can be operated as an 8-ohm device and is equipped with a 400W transformer for 70/100V applications.

A corrosion-resistant extra-thick zinc-plated polyester powder coated U-type mounting bracket is included.

The enclosure is constructed of multilayer glass composite and is heavily braced to maximize low-frequency performance. The 16-gauge stainless steel grille, backed with open cell foam and stainless steel mesh, provides excellent protection in the harshest environments.

The AW526-LS is part of JBL's AE Series, a versatile family of loudspeakers intended for a wide variety of applications.



Specifications:

System:				
Frequency Range (-10 dB):	39 Hz	20 kHz		
Frequency Response (-3 dB):	86 Hz	17 kHz		
Coverage Pattern:	120°	60°	rotatable waveguide	
Coverage Angle:	500 Hz	1000 Hz	2000 Hz	4000 Hz
Horizontal:	128	98	115	108
Vertical:	108	95	67	46
Directivity Factor (Q):	7.9			
Directivity Index (DI):	9 dB			
Crossover Frequency:	1.1 kHz			
Long-Term System Power Rating (IEC):	400 W (1600 W peak), 100 hrs			
Maximum SPL:	127 dB-SPL cont avg (133 dB peak)			
Maximum SPL (@ 4m):	112.11 dB			
System Sensitivity (1W @ 1m):	100 dB			
Sensitivity (1W @ 4m):	86.98 dB SPL			
70V / 100V Transformer Taps:	70V: 400 W, 200 W, 100W 100V: 400W, 200W			
Transducers:				
Low-Frequency Driver:	1 JBL 2265H 380 mm (15 in.) Differential Drive driver with 75 mm (3 in) dual voice coil			
Nominal Impedance:	8 ohms			
Sensitivity ³ (1W @ 1m, within operational band):	98 dB SPL			
High-Frequency Driver:	JBL 2432H, 38 mm (1.5 in) exit compression driver, 75 mm (3 in) voice coil			
Nominal Impedance:	8 ohms			
Sensitivity ⁴ (1W @ 1m):	113 dB SPL			
Waveguide:	PT-H126HF-1			
Physical:				
Enclosure:	Hand-Laminated Fiberglass, gray gelcoat (similar to Pantone 420C), available in black (-BK)			
Suspension Attachment:	2 M10 for Included U-Bracket, 2 M6 for aiming stabilization, 1 M10 on rear for safety			
Grille:	Three layer grille assemblies consisting of 16-gauge powder coated stainless steel, backed with open cell foam and stainless steel mesh.			
Input Connector:	CE-compliant covered barrier strip terminals. Barrier terminals accept up to 5.2 sq mm (10 AWG) wire or maximum width 9 mm (.375 in) spade lugs.			
Environmental Specifications:	IP55C per IEC 529			
Dimensions (H x W x D in horizontal cabinet orientation):	485 x 810 x 478 mm (19.1 x 31.9 x 18.8 in)			
Net Weight:	28.3 kg (62.5 lb)			

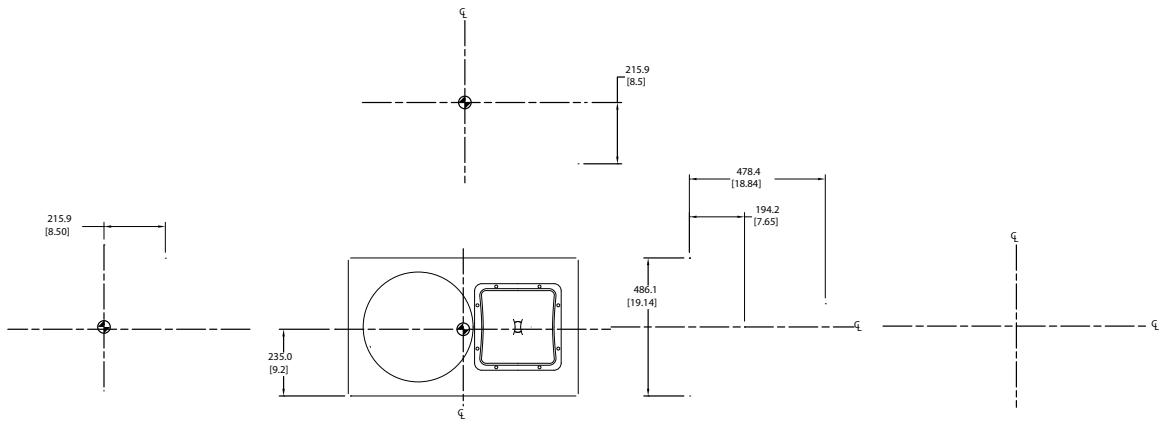
¹IEC standard, full band with pink noise with 6 dB crest factor, 100 hours.

²Calculated based on power rating and sensitivity, exclusive of power compression.

³Anechoic sensitivity in free field, no additional sensitivity gain from boundary loading.

⁴Per EN54-24 Components of voice alarm system - loudspeakers 70V/400W (35V RMS, 70V peak), 100V/400W (50V RMS, 100V peak)

JBL continually engages in research related to product improvement. Changes introduced into existing products without notice are an expression of that philosophy.



⑨ INDICATED DIMENSIONS ARE TO CENTER OF GRAVITY (CG)



